

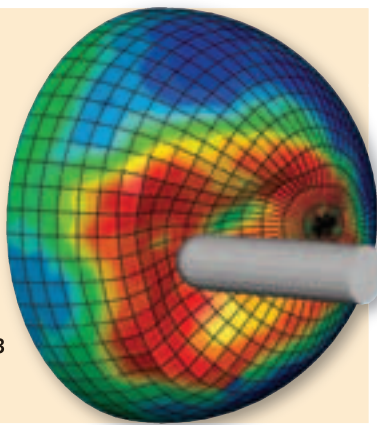
CAD Chronicle

Student edition simulation software

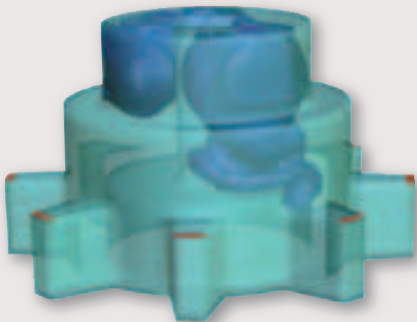
Dassault Systemes has announced ABAQUS Student Edition Version 6.6. The software offers engineering students many of the latest simulation capabilities for vibration analysis, material failure characterization, tire modeling and visualization that were made available earlier this year in the commercial version of ABAQUS Version 6.6 FEA software.

abaqus.com/student

Info Card 333



Fluid dynamics software



Ansys, Inc. has released the latest version of its computational fluid dynamics (CFD) software, Fluent 6.3. More than 100 new features are available, said to enhance the software's capabilities in many areas including moving mesh, reacting flows and multiphase flows. According to Ansys, the main focus of the release is on core solver improvements. A pressure-based coupled solver joins the existing solver options and is also said to improve solution efficiency as well as convergence and robustness for many cases.

ansys.com

Info Card 335

Navigation tool includes 3D command console

3Dconnexion, a Logitech company, has introduced SpaceExplorer, a 3D navigation device that features navigation control, a key console and an ergonomic design.



The navigation device provides responsive control of three-dimensional objects and environments without the repeated steps required to navigate with a keyboard and mouse. The device uses six optical sensors to continuously communicate multiple threads of navigation data to 3D applications. The unit comes with 3DxSoftware with support for Autodesk Design Reviewer, Autodesk DWF Viewer, Google Earth and Google SketchUp software, in addition to support for traditional MCAD packages.

3dconnexion.com

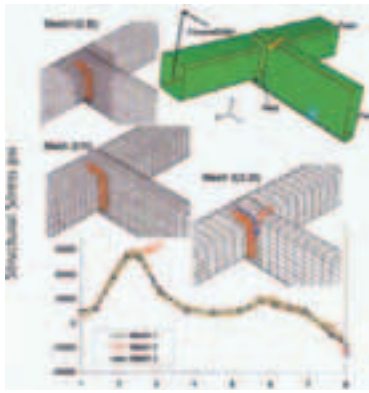
Info Card 332

Durability analysis for FE models

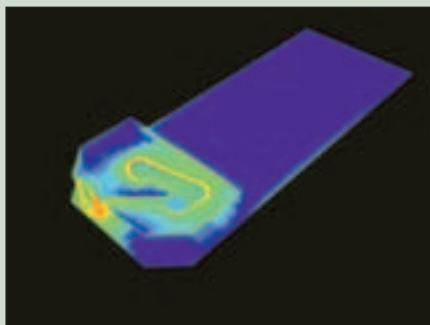
The latest version of the durability analysis software for FE models, fe-safe 5.2 from Safe Technology, includes a number of enhancements along with the add-module, Verity. The Verity method can be applied to structural welds in thick plate, seam welds in thin sheets, and spot welds. Features of the software include distributed processing, an extended materials database, visual loading definition and pre-scanning of FEA models.

safetechnology.com

Info Card 334



EM simulation for circuits

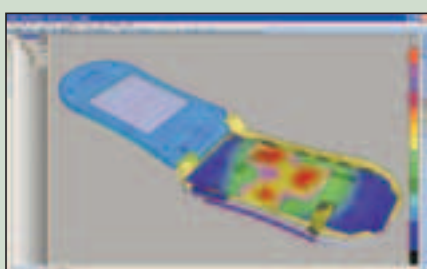


Flomerics has introduced version 7.5 of its MicroStripes 3D electromagnetic (EM) simulation solution for RF/microwave and antenna design which integrates with Applied Wave Research's (AWR) Microwave Office circuit design software. The version enables users to import an excitation waveform during the modeling process, run the simulation and evaluate the results without additional post-processing.

flomerics.com

Info Card 336

Vista-enabled simulation

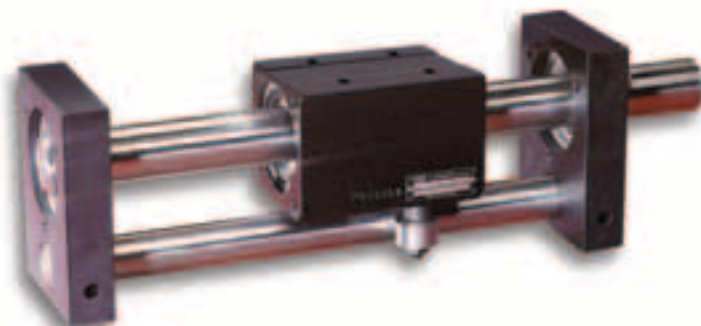


MSC Software Corp. has announced SimOffice, desktop-based simulation software. SimOffice is compatible with the Microsoft Windows Vista, and is a finite element modeler package with MD Nastran for analysis of linear static, linear buckling, normal modes, steady-state heat transfer and dynamic-frequency response. The open platform software provides direct access to a variety of CAD systems and standards. The package also couples to the Microsoft Office suite for ease-of-use.

mcssoftware.com

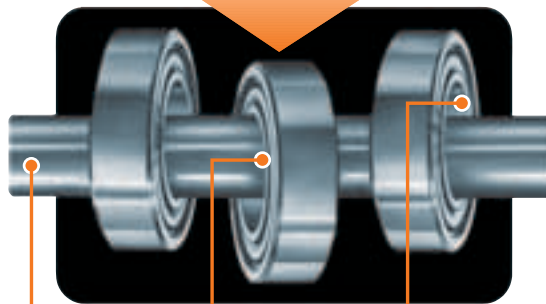
Info Card 331

Forget "Linear Motion 101"



This technology is better...

Using "rolling ring" drives



Smooth linear motion with zero backlash—even during reversal. Use for positioning and reciprocating linear motion in scanning and winding machines, packaging/converting equipment and other automated manufacturing machinery.

No threads. No clogs or jams.

Adjustable angle of bearings on shaft determines travel direction and linear speed.

Specially machined rolling ring bearings convert shaft rotation into linear motion output.

Optional Free Movement Lever permits manual positioning of drive nut without having to jog the system on and off.

For a Brochure or CD-ROM call 610-485-8300, e-mail us at amacoil@amacoil.com or visit our web site at www.amacoil.com



AMACOIL, INC. P.O. Box 2228 • Aston, PA 19014 • 610-485-8300 • Fax: 610-485-2357

Info Card 19

MINIATURE ROTARY ACTUATOR



- COMPACT DESIGN
- HIGH TORQUE
- 1.5 ARC-MIN ACCURACY
- HOLLOW SHAFT DESIGN

Hollow Shaft Brushless DC Actuators feature a through-bore up to 14 mm in diameter and provide high torque and exceptional positioning accuracy. This performance is achieved in a compact design using a high performance harmonic drive coupled to a brushless DC motor and a high resolution encoder. Maximum torque up to 250 in-lb and positional accuracy better than 1.5 arc-minute can be achieved. The FHA Mini Series is available in 3 frame sizes, ranging from 50 to 75 mm square, and 48 to 66 mm in length.

TOTAL MOTION CONTROL



Call 800.921.3332 or Visit www.HarmonicDrive.net

Info Card 20