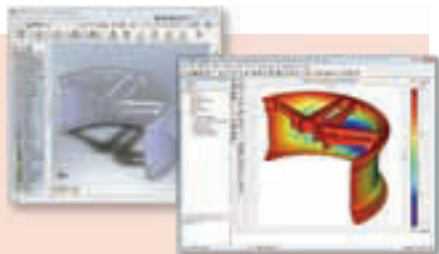


CAD Chronicle

Simulation tie-in for SolidWorks

SolidWorks has named multiphysics simulation software developer COMSOL as one of its select Solution Partners. The program provides SolidWorks 3D CAD users with access to integrated products and services that can further boost productivity. In this case, COMSOL Multiphysics includes a feature in the CAD Import Module called the SolidWorks Live Connection, a bidirectional link that allows users to modify geometry in the CAD environment and automatically transfer these changes to a linked multiphysics model based on that geometry.



comsol.com

Info Card 334

Large assembly design

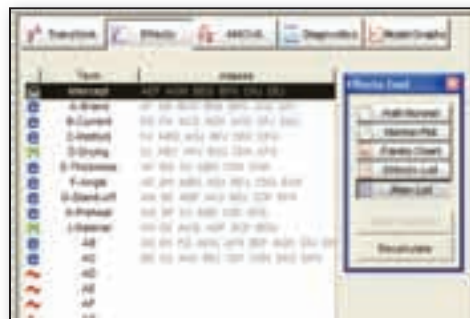


UGS Corp. has announced Version 20 of Solid Edge software, its 3D CAD product. V20 improves supply chain collaboration through integration with the new Teamcenter Service Oriented Architecture. V20 also introduces new translators to help users transition from AutoCAD to Solid Edge, collaborate with CATIA V5, and read the STL file format. A Zones feature has been added to its assembly modeler, as well as Part Feature grouping.

solidedge.com/v20

Info Card 333

Design of experiments



Stat-Ease, Inc. has announced Design-Ease, Version 7.1. The software sets up and analyzes general and two-level factorials that identify the critical factors for improvement of products and processes. New in Version 7.1 is an upfront power calculation for factorial designs, "Min-Run Res V" designs available for 6 to 50 factors, bookmarks for reports with a toolbox to facilitate selection, display grid lines on 3D-graph backplanes, and, the ability to save graphs to files in enhanced Windows metafile (EMF), PNG, TIFF, GIF, BNP, JPEG, and encapsulated Postscript (EPS) formats.

statease.com

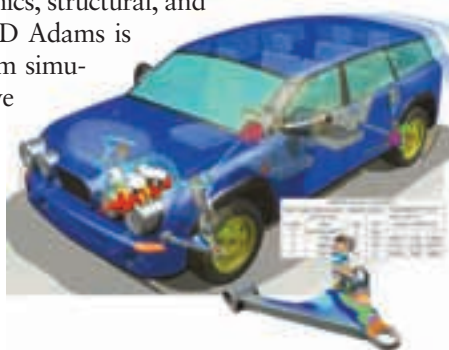
Info Card 335

Mechatronics analysis integrated into simulation

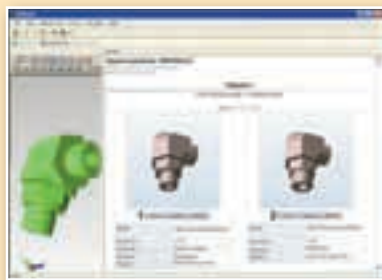
MSC Software Corp. has released MD Adams, an addition to its MD Solutions suite, in order to add integrated multi-body dynamics, structural, and controls systems simulation capabilities. MD Adams is said to enable powerful extensions to system simulation including component flexibility, active control systems and frequency response prediction. The simulation capabilities are said to result in fewer physical prototypes and faster design cycles thereby enabling time to market and right to market.

mcssoftware.com

Info Card 337



Shape-based searching



The latest release of CADSEEK Polaris, shape-based CAD search engine from iSEEK Corp., is said to have enhanced its core shape algorithms for greater accuracy and speed, and extend the technology to hunt down similar individual parts from an assembly. The software is able to keep track of components that comprise an assembly. A user can highlight a single part within an assembly and initiate a CADSEEK search, locating replacement parts.

iseekcorp.com

Info Card 336

Bidirectional CAD-ERP



Elmo Solutions has introduced Agni Link, software designed to ensure synchronization between CAD/PLM and MRP/ERP data. It is usable with a variety of CAD platforms, including: SolidWorks, Autodesk Inventor, AutoCAD, AutoCAD Electrical, Mechanical Desktop and AutoCAD/Mechanical. When any component, subassembly or assembly is processed, Agni Link determines where appropriate metadata is sent, and updates it accordingly.

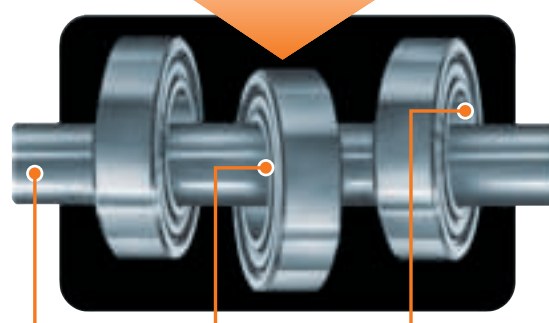
elmosolutions.com

Info Card 338

Forget "Linear Motion 101"



This technology is better...



UHING "rolling ring" drives

Smooth linear motion with zero backlash—even during reversal. Use for positioning and reciprocating linear motion in scanning and winding machines, packaging/converting equipment and other automated manufacturing machinery.

No threads. No clogs or jams.

Adjustable angle of bearings on shaft determines travel direction and linear speed.

Specially machined rolling ring bearings convert shaft rotation into linear motion output.

Optional Free Movement Lever permits manual positioning of drive nut without having to jog the system on and off.

For a Brochure or CD-ROM call 610-485-8300, e-mail us at amacoil@amacoil.com or visit our web site at www.amacoil.com



AMACOIL, INC. P.O. Box 2228 • Aston, PA 19014 • 610-485-8300 • Fax: 610-485-2357

Info Card 28

NO EARS TO INTERFERE™ SPIRAL RETAINING RINGS

CAD MODELS

Free native CAD models of all stock parts

COMPATIBLE WITH SNAP RING GROOVES

- Uniform cross-section does not interfere with assembly
- Allows for tight radial applications
- Easy to assemble and remove

STAINLESS STEEL FROM STOCK

- 5,000 stock sizes
- Carbon and stainless steel stocked from 1/4" to 16"
- No-Tooling-Costs™ on specials; .200" to 90"



FREE SAMPLES

Smalley
Steel Ring Company
www.smalley.com • (847) 719-5900

Represented in Canada by:
Rotoprecision Inc.
www.rotoprecision.ca • (888) 712-3400

Info Card 29