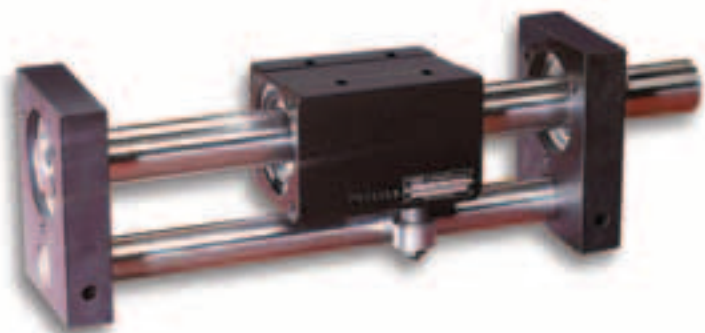
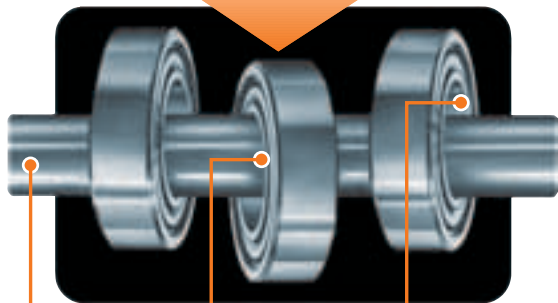


# Forget "Linear Motion 101"



**This technology  
is better...**



**UHING  
"rolling ring"  
drives**

Smooth linear motion with zero backlash—even during reversal. Use for positioning and reciprocating linear motion in scanning and winding machines, packaging/converting equipment and other automated manufacturing machinery.

**No threads.  
No clogs  
or jams.**

**Adjustable angle  
of bearings on  
shaft determines  
travel direction  
and linear speed.**

**Specially  
machined  
rolling ring  
bearings convert  
shaft rotation  
into linear  
motion output.**

**Optional  
Free Movement Lever  
permits manual  
positioning of drive nut  
without having to jog  
the system on and off.**

For a Brochure or CD-ROM call 610-485-8300,  
e-mail us at [amacoil@amacoil.com](mailto:amacoil@amacoil.com) or visit our web site at  
[www.amacoil.com](http://www.amacoil.com)



**AMACOIL, INC.** P.O. Box 2228 • Aston, PA 19014 • 610-485-8300 • Fax: 610-485-2357

Info Card 8

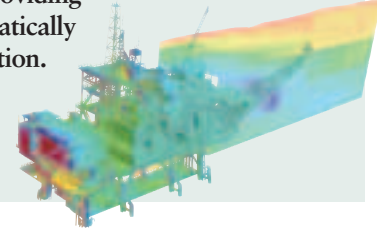
## CAD Chronicle

### Computational fluid dynamics

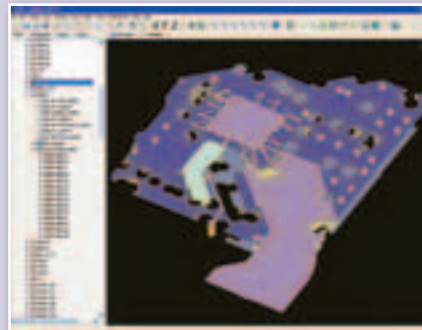
Developed for computational fluid dynamics, STAR-CCM+ V2.04 software incorporates a process that links an automated surface wrapper to CD-adapco's meshing technology. The surface wrapper "shrink-wraps" what is said to be a high quality triangulated surface mesh onto any geometrical model, closing holes in the geometry and joining disconnected and overlapping surfaces, providing a single manifold surface that can be used to automatically generate a computational mesh without user intervention. The approach is also said to reduce the time spent on large assembly surface cleanup.

[cd-adapco.com](http://cd-adapco.com)

Info Card 338



### Design flow for packaging

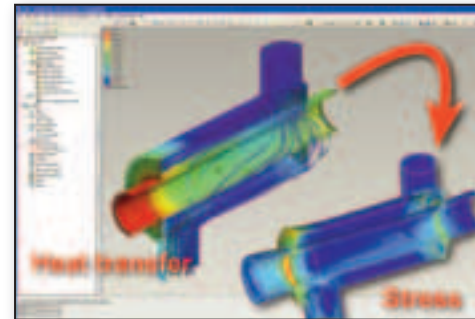


ANSYS, Inc. has announced the release of version 3.0 of its ANSYS Icemax software for circuit extraction of advanced integrated circuit (IC) package designs. This release provides IC package designers with a flexible modeling environment, to set up and analyze a wide range of system-in-package designs, including package-on-package, package-in-package and package-on-PCB structures. The Icemax user interface allows users to import multiple designs within the same model.

[ansys.com](http://ansys.com)

Info Card 333

### EFD.Pro support for Pro/Mechanica



Flomerics Ltd. has announced that EFD.Pro, its Engineering Fluid Dynamics (EFD) analysis software, now supports Wildfire 3 as well as an integrated interface with Pro/ENGINEER Mechanical for structural analysis. EFD.Pro, which is embedded in Pro/ENGINEER, is used to help engineers solve problems involving both fluid and structural issues. EFD.Pro results can be applied as loads for structural analysis inside Pro/Mechanica. The automated interface, EFD2MECHANICA, is said to reduce the time for preparing analysis models.

[flomerics.com](http://flomerics.com)

Info Card 337

## MINIATURE ROTARY ACTUATOR



- COMPACT DESIGN
- HIGH TORQUE
- 1.5 ARC-MIN ACCURACY
- HOLLOW SHAFT DESIGN

**Hollow Shaft Brushless DC Actuators** feature a through-bore up to 14 mm in diameter and provide high torque and exceptional positioning accuracy. This performance is achieved in a compact design using a high performance harmonic drive coupled to a brushless DC motor and a high resolution encoder. Maximum torque up to 250 in-lb and positional accuracy better than 1.5 arc-minute can be achieved. The FHA Mini Series is available in 3 frame sizes, ranging from 50 to 75 mm square, and 48 to 66 mm in length.

TOTAL MOTION CONTROL



Call 800.921.3332 or Visit [www.HarmonicDrive.net](http://www.HarmonicDrive.net)

Info Card 9

### Math expressions for analysis

Maplesoft has announced the launch of BlockImporter for Simulink, a Maple add-on tool that enhances connectivity with the Math Works suite of products. The product imports Simulink diagrams into Maple and converts them to mathematical expressions for analysis and problem-solving. Once these diagrams are converted into mathematical equations, they can be analyzed, optimized, and simplified, then converted back to Simulink using Maplesoft BlockBuilder. This enables the user to validate the mathematical integrity of the model.

[maplesoft.com](http://maplesoft.com)

Info Card 334



### ArtCAM for designers



Delcam has released "design-only" versions of its ArtCAM Pro and ArtCAM JewelSmith software. The Designer versions are aimed at users that want to take advantage of the design features within the software but do not need the systems' machining options. ArtCAM software is said to let people with creative flair increase their productivity and raise quality by using computer-based design methods, alongside their traditional skills.

[artcam.com](http://artcam.com)

Info Card 336

### Shape definition tools



Autodesk has introduced AliasStudio 2008 software, a toolset for the creative design process. The software is said to integrate the tools designers require for the shape definition and communication processes – from sketching to production modeling – and makes them readily accessible through an intuitive working environment. AliasStudio tools include DesignStudio, Studio, AutoStudio and SurfaceStudio.

[aliasstudio.com](http://aliasstudio.com)

Info Card 335