

Your source for ALL DE-STA-CO products and more...

Manual & Power Clamps



Grippers, Slides & Actuators



NEW



End Effectors



Conveyors



Custom Control Panels

Adding Wainbee's extensive offering of **pneumatic and hydraulic components** and our **electronic control capabilities** to these great DE-STA-CO products provides you with one-stop solutions to your automation and motion control challenges.



1-888-WAINBEE wainbee.com

hydraulics • electrical motion • vacuum • industrial power tools

Info Card 59

CAD Chronicle

3D navigation devices

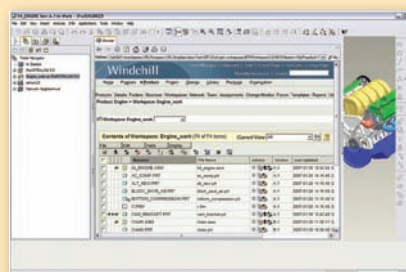
3Dconnexion has announced that its 3D navigation devices are now compatible with Autodesk Inventor 2008 and AutoCAD 2008. The navigation devices are designed to simplify the control of 3D imagery in traditional 3D design software and in applications that incorporate 3D visualization. The devices are used in conjunction with the mouse and keyboard and are held in the alternate hand to simultaneously pan, zoom and rotate 3D objects.

3dconnexion.com



Info Card 334

Windchill 9.0 optimizes product development

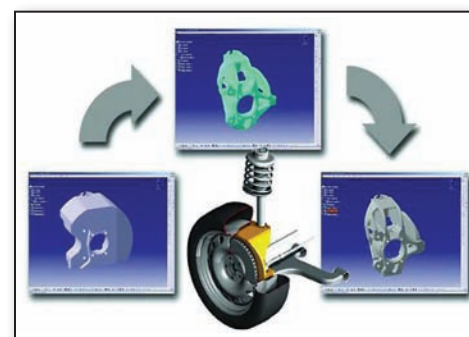


PTC has announced Windchill 9.0, the latest release of the content and process management software. The release is said to enable companies to reuse designs, make modifications, manage work-in-process tasks, and synchronize activities among work-groups and the enterprise. In addition, MPMLink Windchill module enables simultaneous development of product designs and manufacturing process plans to eliminate miscommunication issues and shorten development cycle time.

ptc.com

Info Card 333

CATIA optimization software



HyperShape/CATIA, an optimization software product, is a direct integration between Dassault Systemes CATIA V5 solution and Altair design optimization technology, Altair OptiStruct. HyperShape/CATIA generates structurally optimal design concepts from supplied packaging information, loads, constraints and required product performance. Typically used ahead of CAD design, HyperShape/CATIA aids designers in developing completely new, mass-efficient, high-performance product design proposals.

altairengineering.ca

Info Card 335

Vickers-Warnick the Source for Leuze Electronic



identify



detect



protect

For more information, call
1-800-263-6835
www.vickers-warnick.com



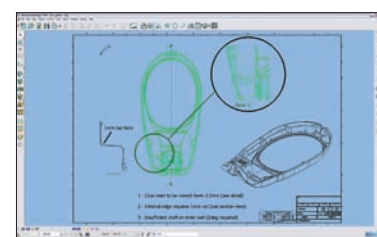
Stoney Creek, Mississauga, Waterloo, Windsor & Rochester

Info Card 60

Free software for non-CAD specialists

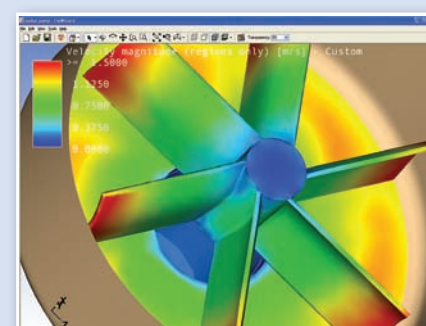
Delcam has introduced free software, PowerSHAPE-e, to allow even those that are not CAD specialists, to view, experiment with and comment on CAD data throughout any project. PowerSHAPE is said to incorporate a wide range of easy-to-use surface and solid modeling functionality to modify imported models. The software incorporates all the Delcam Exchange data translation options and so can read in files from all the main CAD systems, as well as neutral formats such as IGES and STEP. For a demonstration, visit the Delcam booth 4138 at CMTS October 15-18 in Toronto.

powershape-e.com



Info Card 336

Rapid flow software

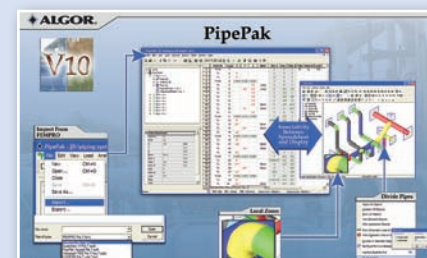


FloWizard 3.0 software from Fluent is a rapid flow modeling tool that allows design and process engineers to validate their designs much earlier in the product development cycle. Tasks that conventionally require a lot of manual intervention – including meshing, solution steering, and reporting – are performed automatically by the software. The software can also interact with a range of popular 3D solid modelers.

fluent.com

Info Card 337

Analysis for piping



Algor, Inc., has announced its piping design and analysis software, PipePak V10, features bi-directional associativity between its spreadsheet and graphical display window, including immediate display of pipes entered via the spreadsheet. The features help define complete piping systems and perform structural analysis in compliance with piping codes. The application also includes faster and easier importing of piping models and DXF file geometry from the FEMPRO single user interface.

algor.com

Info Card 338