

**Protect metal parts from wear, corrosion and galling**

**Increase The Life Of Metal Parts & Equipment**

General Magnaplate's coatings transform metal parts into corrosion and chemical-resistant, superhard, dry-lubricated products that last longer, are more cost-efficient, and more reliable. General Magnaplate's coatings can also significantly increase the life of renewable energy parts and tooling.



**General Magnaplate**

Tel: 800.441.6173 (US & Canada)  
www.magnaplate.com

**Give our Environment a Break**



**Use Mechanical Screw Jacks Instead of Hydraulic Cylinders**

Did you know...

**Mechanical Screw Jacks**

- self-locking, zero creep
- no messy fluids to deal with
- best for harsh environments
- minimal drive components
- ideal for high duty cycles
- cost-effective solution

**Hydraulic Cylinders**

- can lose position or creep due to pressure loss
- fluid may leak
- will seize in harsh environment
- numerous components = costly to repair/replace

As Master Canadian Distributor for Joyce screw jacks, Trans-Quip Inc. offers a full model range (jacks from 250 lbs. to 25 tons), quick delivery and custom engineering for complete power transmission systems. Your machinery will run more efficiently while helping the environment. Contact us today for more information or visit [www.trans-quip.com](http://www.trans-quip.com).

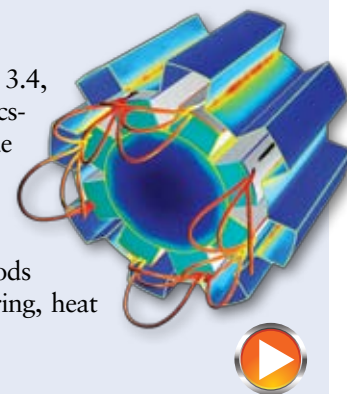


**Trans-Quip Inc.**  
Tel: 905-945-4480  
Toll Free: 1-866-261-0251  
Web: [www.trans-quip.com](http://www.trans-quip.com)  
Email: [info@trans-quip.com](mailto:info@trans-quip.com)

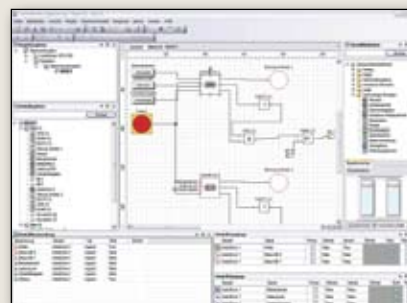
**CAD Chronicle**

**Analysis with multicore support**

COMSOL, Inc. has announced COMSOL Multiphysics 3.4, an environment for modeling and simulating any physics-based system. Multicore processor support is said to provide unprecedented performance, solver speed, and accuracy in multiphysics simulations. In addition to applying parallel computing throughout the solution process, Multiphysics 3.4 introduces fluid dynamic solver methods for simulating very large problems in chemical engineering, heat transfer, or microfluidics applications.  
[www.comsol.com](http://www.comsol.com)

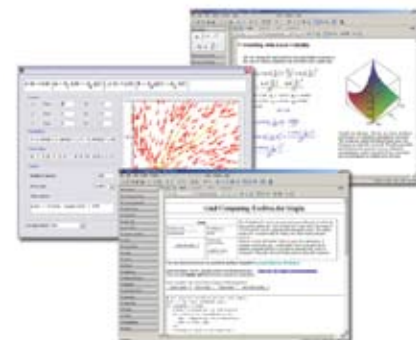


**Machine simulation**



The IndraWorks Machine Simulator add-on simulates the I/O peripherals of automation systems, extending the range of simulation tools for the IndraLogic and IndraMotion control systems from the Rexroth Automation House. Additional Rexroth simulation tools with the IndraWorks Machine Simulator include IndraWorks View3D for 3D machine animation and the VAM Simulator for virtual machine or simulation operation.  
[www.boschrexroth.ca](http://www.boschrexroth.ca)

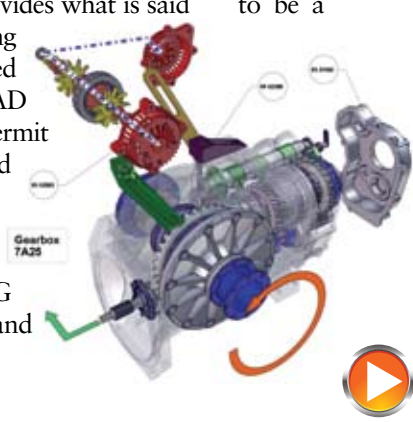
**Distributed math computing**



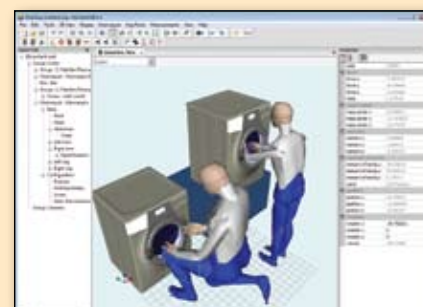
Maplesoft has announced the addition of a toolbox to the Maple Professional Toolbox Series. The Grid Computing Toolbox enables distributed computing using Maple, an application for solving complex mathematical problems and creating interactive technical documents. Users start a server process on each machine on a network and the grid will self-assemble as each node automatically detects the other nodes that are present. It also integrates into existing job scheduling systems.  
[www.maplesoft.com](http://www.maplesoft.com)

**Composer leverages 3D model data for tech pubs**

3DVIA Composer from Dassault Systemes provides what is said to be a single, easy-to-use to learn and use 3D publishing software application. The software can be used by non-technical users and does not require CAD knowledge or training. Intelligent views permit complex product procedures to be communicated using a minimum of text. Input data can come any 3D CAD system and outputs are industry-standard file formats, including PDF, HTML, AVI and graphics formats like SVG and CGM. Animations, including kinematics and reverse-kinematics.  
[www.3dviacomposer.com](http://www.3dviacomposer.com)

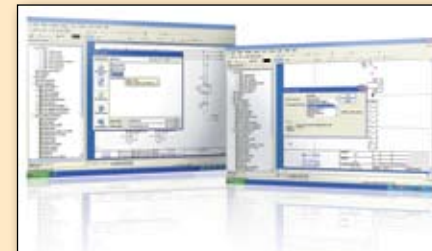


**Ergonomics platform**



NexGen has announced HumanCAD Version 1.1, digital human modeling technology for determining the human fit of products and workplaces before they are built. The version has a plug-in system and inverse kinematics. An ErgoTools module includes the HumanCAD 3D static biomechanical model. Other features include camera management that allows for the creation of custom viewpoints and cameras.  
[www.nexgenengo.com](http://www.nexgenengo.com)

**Electrical schematics**



The IGE+XAO Group has introduced SEE Freedom, a service for the CAD market. The "all-inclusive" offer includes access to the software package, training (initial and update training), hotline, as well as new releases. SEE Freedom is built around SEE Electrical, the IGE+XAO Group software package for electrical schematics. The package is available in three versions, from basic to support for advanced functions such as PLC input/output management and automatic plan generation.  
[www.see-electrical.com](http://www.see-electrical.com)