

CAD Chronicle



NX Nastran Version 3

UGS has announced NX Nastran Version 3, the latest release of the company's software for advanced finite element analysis. V3 includes Hierarchical Distributed Memory Parallel Processing said to provide users with the ability to solve extremely large scale dynamics simulations in much shorter elapsed times. NX Nastran scalability allows up to 64 simultaneous CPUs in a cluster configuration.

ugs.com

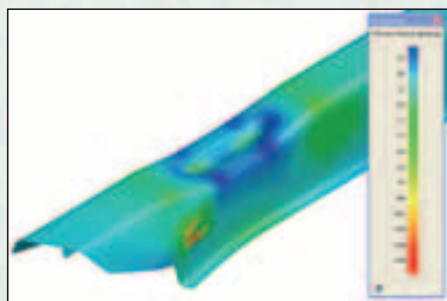
Circle DPN 330

Linux visualization system

Answering mounting demand for more visualization capability in the hands of Linux system users struggling with big data problems, Silicon Graphics Inc. has extended its line of Prism visualization systems with a desktide model. The desktide system provides up to 24 GB of memory and two full bandwidth graphics pipelines. CAE environments can enhance productivity with the system, which enables engineers to view and analyze more time steps in an interactive workspace, the company says. For more granular analysis, two FireGL graphics pipelines give the desktide system the ability to support dual projection and stereo viewing.

sgi.com/prism

Circle DPN 329



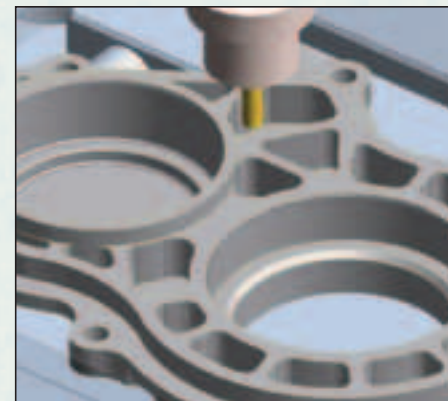
Die and mold quoting

Cimatron has announced two products to address tool shop price quotes for new jobs. DieQuote and MoldQuote support the entire quote generation process, starting with the import of part data and split-

ting the part, determining mass properties (weight, volume, surface area), through the development of a blank layout, thinning and gathering material conditions (for die quotes) to final quote generation in the desired format. All quote-related data is stored in a database, allowing users to search for past quotes produced in similar situations, track successful versus unsuccessful quotes, and conduct win-loss analysis.

cimatron.com

Circle DPN 333

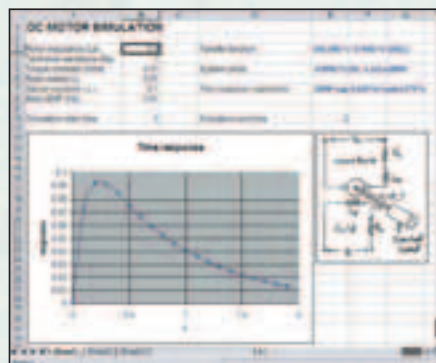


Inventor 10 CAM support

Pathtrace has announced that EdgeCAM Version 9.5 fully supports Autodesk Inventor 10 mechanical design software and provides true data integrity and model-to-toolpath associativity. EdgeCAM Solid Machinist respects project paths and sub-assemblies and complies with Autodesk data management rules.

edgcam.com

Circle DPN 334



Metal forming for SolidWorks

3D QuickTools

has announced a CAE application for metal simulation. Aimed at the product development and tooling designer, 3DQuickForm is based on SolidWorks 3D CAD. Users can either import different types of CAD data or build the die geometries in SolidWorks environment for the forming studies. The built-in mesher is automatic and allows user adjustments to meet different needs.

3dquickpress.com

Circle DPN 332



Math tool makes documents

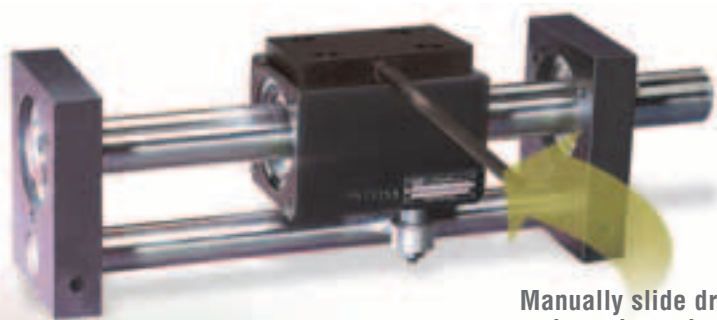
Maplesoft has announced Maple 10, developed to solve complex mathematical problems while creating executable technical documents that provide both the answer and the thinking behind the analysis. Key features and benefits of Maple 10 include a MathML Equation Editor that lets users create textbook-quality equations in natural mathematical notation, interactively. It includes expression templates, a handwriting palette and automatic equation numbering.

mathsoft.com

Circle DPN 331

Rolling Ring linear drives

Zero backlash. Jam-proof design.



Manually slide drive using release lever

- ▶ For positioning & reciprocating motion applications
- ▶ Smooth movement; ultra-low maintenance

Uhing® Rolling Ring linear drives have zero play when the shaft is rotated – even during reversal. The threadless shaft won't clog or jam. If the system is somehow overloaded, the shaft simply slips instead of churning and grinding.

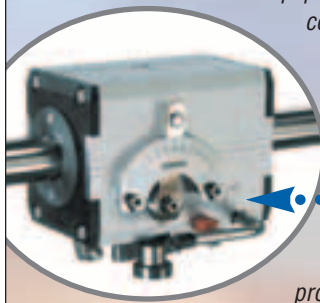
- Example applications: material handling machines, winding equipment, test and measurement devices, packaging & converting equipment.

- Uhing Drives are available separately or on shaft in custom assembly.

- Wide range of sizes for varying linear speeds & axial thrust requirements.

- Simple set-up & operation

Some models feature mechanical control over speed and travel direction – without programming or electronics.



Request a Brochure or CD-ROM

1 (800) 252-2645

Email: amacoil@amacoil.com

www.amacoil.com

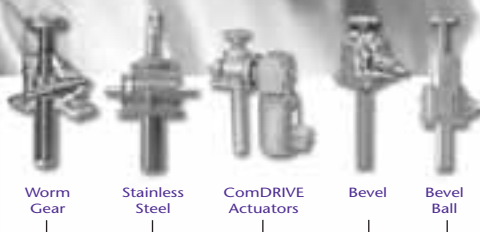


Distributed by Amacoil, Inc.
PO Box 2228, Aston PA, 19014
Phone: (610) 485-8300

Circle DPN 58

"Need a Solution, Not Just a Jack?"

www.trans-quip.com



Trans-Quip Inc. provides a personal level of customer service that only a smaller, more flexible firm can offer.

Our product line-up includes a wide variety of Joyce screw jacks including metric machine screw jacks and linear actuators. See our website for full product details and technical support materials. With experienced engineers and technicians only a phone call away, Trans-Quip Inc. is ready to lend a helping hand with your next powertrain project.

Call or email us today to get the new 2005 Joyce catalogue!

info@trans-quip.com
1-866-261-0251



Ball Screw



Circle DPN 59