

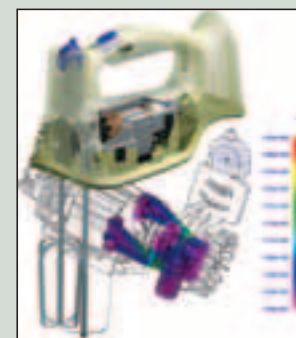
CAD Chronicle

Femap Version 9.1 finite element modeler Windows upgrade

UGS Corp. has announced Version 9.1 of Femap, its pre- and post-processing finite element modeling application. The user interface is updated to reflect the latest generation Windows look and feel. Femap is also integrated with Nastran solver technology. Enhancements include: a fully associative interface with Solid Edge V18 for effective geometry transfer; and, a direct CATIA V5 translator in addition to translators for CATIA V4, Pro/Engineer, SolidWorks, any Parasolid or ACIS geometry as well as STEP and IGES; a fully integrated BASIC development environment; and, improved mesh quality.

ugs.com/femap

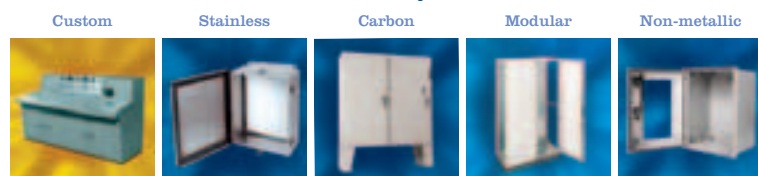
Circle DPN 329



Choose from a full line of industrial enclosures off the shelf or ask us to customize our standard enclosures to suit your needs.

Our inline process makes it easy to produce a solution to your exact specifications with turnaround that suits your timeline.

Solutions for all your needs

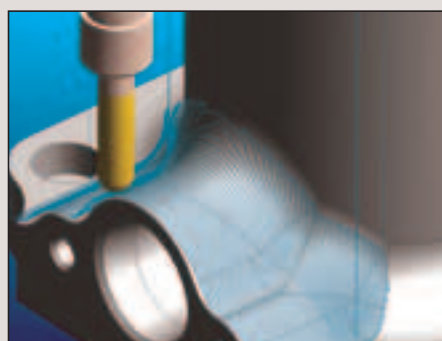


Ralston
Metal Products Limited

You create the need. We customize the solution.
1-800-265-7611 www.ralstonmetal.com

Circle DPN 46

Solids-based machining



Pathtrace has announced that the latest release of EdgeCAM computer-aided manufacturing (CAM) software supports SolidWorks 2006 3D mechanical design software with capabilities for generating machining strategies for SolidWorks parts. SolidWorks 2006 features more than 200 customer-requested enhancements and innovations that allow design engineers to analyze and validate designs as they work.

pathtrace.com

Circle DPN 330

Large format integrated color print, copy and scan system

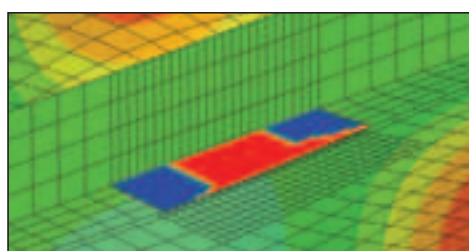


Océ has announced that its TCS400 integrated large format color print, copy and scan system is now supported by the InterPlot Driver Pack from Bentley Systems. The InterPlot Driver Pack is part of Bentley's Digital InterPlot, a plotting software product capable of electronic plot creation, storage, and network and Internet distribution. Bentley SELECT subscribers who already have the InterPlot Driver Pack can download the most recent version, which includes the TCS400 driver, from the Bentley SELECT website (bentley.com) free of charge. New users can order the InterPlot Driver Pack from either Bentley or Océ.

oce.com

Circle DPN 331

Virtual crack closure technique predicts fractures, failures

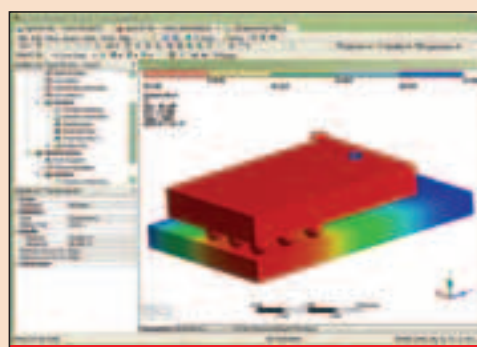


Abaqus, Inc., has announced VCCT for Abaqus add-on capability for the Abaqus software suite. The software is an implementation of the Virtual Crack Closure Technique (VCCT), a technology that Boeing developed for predicting fracture and failure in laminated composite materials.

abacus.com

Circle DPN 334

3D-planar electromagnetic modeling software



ANSYS, Inc. has announced version 10.0 of its ANSYS software suite. The version is said to provide major advances in performance, ease-of-use, interoperability and coupled physics technology, such as fluid structure interaction. Current customers can access version 10.0 through the ANSYS customer portal.

ansys.com

Circle DPN 332

On-machine design verification



Delcam has launched a version of its PowerINSPECT inspection software that can be used for on-machine verification as well as for inspection on coordinate measuring machines and other inspection devices. The version allows off-line programming of the inspection sequence for the machine tool, with integrated simulation and collision checking, in order to minimize the time needed for the verification operation. It compares tooling and sample components against CAD data, and produces.

delcam.com

Circle DPN 333

Motion Without Limits™

DualVee Motion

DualVee® Guide Wheels Travel Farther, Faster, Smoother in Harsh Environments

▶ Innovative DualVee® Motion is the Leader in Vee Technology

- New Higher Load Capacities
- New Studded Polymer Wheels
- Impervious to Contaminated Environments
- Complete Range of Single and Double Edge Track
- Long Travel Lengths
- Stainless Steel and Carbon
- Smooth, Quiet, Fast

PTDA Member

888.580.8272 www.bwc.com

BISHOPWISECARVER

Circle DPN 47