

Spotlight

Factory Automation

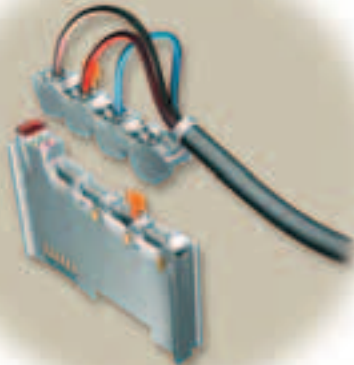


Certified signal conditioners

Weidmuller has added signal conditioners to its Class 1 Division 2 product offering. These include: WaveAnalog CCC Loop Powered Isolator; WavePak Loop Splitter WavePro RTD; and, WavePro Thermo. All feature plug and socket connections with either screw terminals or tension clamps. Units are certified for groups A, B, C and D, and temperature code T5 or T6.

weidmuller.ca

Circle DPN 301



I/O-system connectors

WAGO Corp. has added pluggable wiring connectors to its I/O-System line of products. The 753 series connectors include: an integrated orange pull-tab release for a tool-less operation; mini-WSB marker tags on the connector and I/O module for identification; built-in test points for troubleshooting; matched plug-and-socket coding system; and integrated strain relief.

wago.us

Circle DPN 299



EtherNet/IP for Logix

An EWEB Toolkit from Rockwell Automation helps capture data from Logix-based controllers and for monitoring over the web in a single-screen view. With the toolkit, engineers can create web pages without any HTML programming and access plant floor data with drag-and-drop objects. The objects deliver view-only live system data via web pages.

ab.com

Circle DPN 297

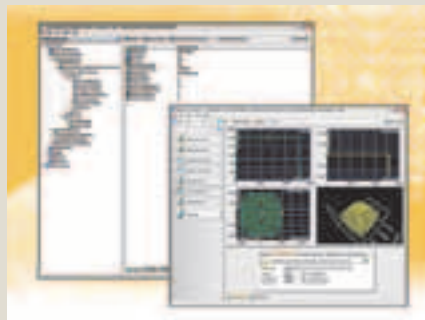


Confocal displacement series

The LT-9000 series of laser confocal displacement meters from Keyence Canada provide 0.01-micron thickness measurements on transparent objects using a single sensor head, even when target surfaces are wet, angled or irregular. Multiple measurement modes include: profile, transparent object thickness, angle and cross-sectional area.

keyence.com

Circle DPN 296



Soft motion interface

Engineers now can use the National Instruments LabVIEW graphical development environment to create distributed motion applications with the NI SoftMotion Controller for Copley CANopen and Ormec IEEE 1394 intelligent drives. The controller is a soft motion interface between NI-Motion driver software and distributed intelligent drives.

ni.com

Circle DPN 302



Nodes provide safe inputs

Pepperl+Fuchs has introduced two SafetyNodes. The G2 style module is IP67 rated for field-mounted applications with Yellow Flat Cable, while the KE1 style is IP20 rated for enclosure applications on DIN rail. The SafetyNodes are compatible with ASi-SaW networking applications.

am.pepperl-fuchs.com

Circle DPN 298

Conveyor re-engineering adds strength and reliability

Dorner Manufacturing has announced the durability and reliability of its 2200 series conveyors has been enhanced through a re-engineering that protects



the bearings. Bearings on the conveyors are now installed into a redesigned blind housing hole instead of a through hole. Other features of the series include: instant belt tensioning; V-guide bed plate and belt for positive belt tracking; no special tools required; load capacity up to 80 lb; belt speeds up to 276 fpm; belt widths between 1.75 and 24 in.; and, conveyor lengths between 18 in. and 18 ft.

dorner.com

Circle DPN 303

Indicators suitable for temperature and process display

Danaher Industrial Controls Group has announced the '+' (Plus) series digital panel indicators for its Partlow and West brand controller product lines. The 1/16 and 1/8 DIN indicators are configurable via plug-in output boards. The indicators are suitable for temperature and process display applications – process values are shown in a numerical LED display



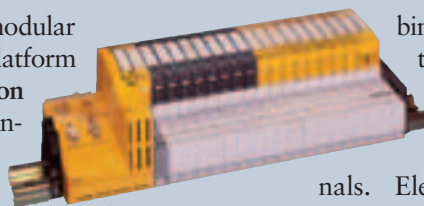
that changes from bright green to bright red during an alarm condition. Features available include: latching alarms, multipoint scaling, tare function, auto-detection of installed output modules, jumperless input configuration, PC configuration software and RS485 communication.

danaherindustrialcontrols.com

Circle DPN 304

Modular I/O and control platform enables fieldbus safety

The PSSuniversal modular I/O and control platform from Pilz Automation Safety provides standard control functions together with safety functions for mid to top-range automation needs. At the initial stage, the platform enables communication via fieldbus systems in combination with the Pilz safe bus system SafetyBUS p. The flexible design consists of various head modules, com-



combined with base modules that are connected alongside and are available with screw or cage clamp terminals. Electronic modules are installed on to these base modules, enabling the system to be customized. The design meets Cat. 4 in accordance with EN 954-1 or SIL 3 in accordance with IEC 63508, as well as other international standards.

pilz.com

Circle DPN 300



4, 8-port junction boxes

Turck Inc. has introduced 4- and 8-port pentafast junction boxes that provide multiple I/O points. The junction boxes contain an integrated PUR cable or a M12 eurofast 12-pin Quick Disconnection, and are offered with power and signal LEDs. The nylon-encapsulated junction boxes provide IP67 protection and meet UL, CSA, and NEMA 1, 3, 4 and 6P standards.

chartwell.ca

Circle DPN 305



AC inductive sensors

Balluff Inc. has announced 18 two-wire ac inductive sensors that provide the same general performance as the company's ac/dc models, but at a lower cost. The tubular style ac prox sensors have a current load capacity of 500 mA, and are available in M12 through M30 sizes in shielded and unshielded configurations. Multiple cable lengths are available.

balluff.com

Circle DPN 306