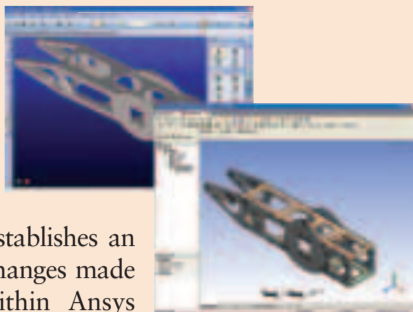


## Ansys Workbench integrates with CoCreate 3D CAD

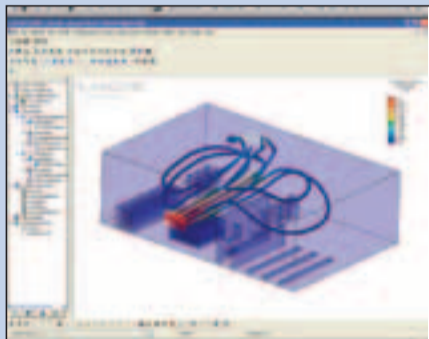
Ansys, Inc. has announced the availability of a direct connection between its Ansys Workbench simulation environment and CoCreate's 3D CAD software. With the integration, solid models created in CoCreate's Designer Modeling can be transferred directly to the Ansys simulation environment. The integration, via CoCreate's new .NET API, also establishes an association with the 3D CAD model so that changes made within Designer Modeling are updated within Ansys Workbench.

[ansys.com](http://ansys.com)



Circle DPN 333

## Linear static stress analysis

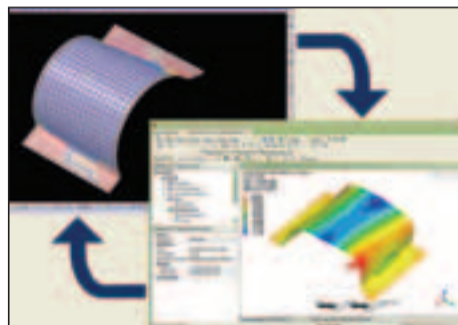


Algor, Inc., has announced that its latest software release, V18, features expanded capabilities for linear static stress analysis (optimized for 64-bit operating systems). Mechanical event simulation features hyperelastic material models and finite-strain viscoelastic material models. Fluid flow analysis enhancements feature automatic modeling of the fluid medium and a new segregate steady solver for faster runtimes.

[algor.com](http://algor.com)

Circle DPN 332

## Composite parts design



Vistagy, Inc., and Ansys, Inc. have announced a partnership to integrate FiberSIM software and Ansys solver technology to achieve improved composite design, manufacturing and performance simulation. The integration available in Ansys 10.0 and FiberSIM 3.5 and higher makes it possible for analysts to access the CAD master model of a composite part in its to-be-manufactured state at any time during the design process and verify that the part meets the design performance specifications.

[vistagy.com](http://vistagy.com)

Circle DPN 334



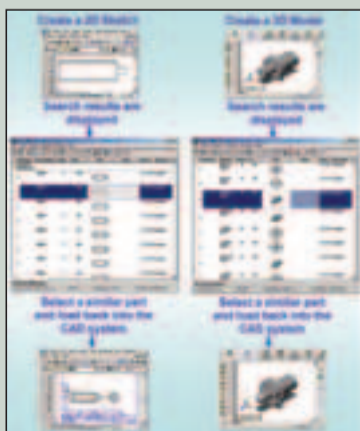
## Mastercam includes MC support

Mastercam has announced support for 3Dconnexion's line of motion controllers in Mastercam X default configurations. Motion controllers from 3Dconnexion allows users to roll models around in space while working, without having to take hands off of the mouse or hit the keyboard. 3Dconnexion drivers have Mastercam settings built in and are pre-set with common Mastercam X function and shortcut keys already programmed.

[mastercam.com](http://mastercam.com)

Circle DPN 331

## Design retrieval system



CADFind from Applied Search Technology Ltd. is an engineering design retrieval system that can mix 2D drawings and 3D parts (models) such as AutoCAD and SolidWorks in the same database and search for them using either a 2D sketch or a 3D model as the source.

[sketchandsearch.com](http://sketchandsearch.com)

Circle DPN 330

## Scalable data management



UGS Corp. has announced Teamcenter Express, a collaborative product data management (cPDM) product built for fast deployment. The product applies pre-configured industry best practices to provide ease of installation, setup, ease of use and support. It can be coupled with a wide variety of CAD applications including Solid Edge, NX, CATIA, AutoCAD, Inventor and SolidWorks.

[ugs.com/velocity](http://ugs.com/velocity)

Circle DPN 335